



House - Mid Terrace

89 MILTON  
ROAD,  
SWANSCOMBE,  
DA10 0LS

Per Month

£1,395

### FEATURES

- Two-bedroom terraced home
- Additional loft/storage room
- Close to Swanscombe Station & Ebbsfleet International
- Spacious living/dining area
- Excellent transport connections
- Near local amenities and Bluewater Shopping Centre



BEXLEY HOMES

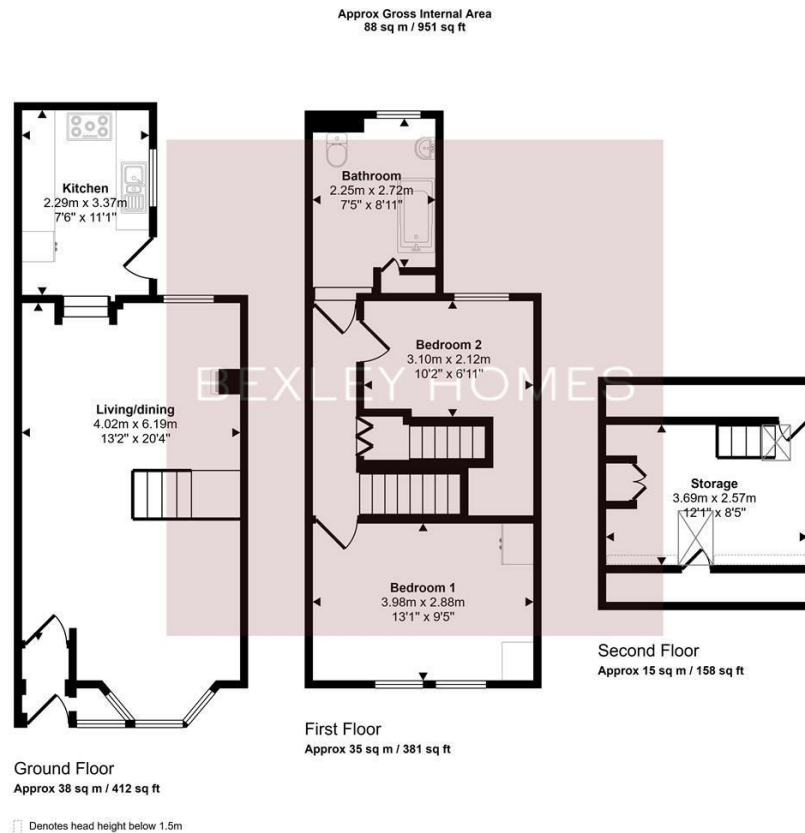
# 2 Bedroom House – Mid Terrace located in Swanscombe

Two Bedroom Terraced Home To Rent – Swanscombe, DA10

Available to rent is this well-presented two-bedroom terraced home situated in the heart of Swanscombe, offering spacious and comfortable accommodation throughout.

The ground floor features a bright and generous open-plan living/dining area, ideal for both relaxing and entertaining, alongside a separate fitted kitchen with ample storage and workspace.

To the first floor are two well-proportioned bedrooms and a modern family bathroom. An additional loft/storage room on the second floor provides useful extra space, perfect for storage or a home office setup.



This floorplan is only for illustrative purposes and is not to scale. Measurements of rooms, doors, windows, and any items are approximate and no responsibility is taken for any error, omission or mis-statement. Icons of items such as bathroom suites are representations only and may not look like the real items. Made with Made Snappy 360.

Call us on  
01322 948500

Belvedere@bexleyhomes.co.uk  
www.bexleyhomes.co.uk

Council Tax Band  
**B**

Energy Efficiency Rating		Current	Potential
<i>Very energy efficient - lower running costs</i>			
(92 plus)	<b>A</b>		
(81-91)	<b>B</b>		
(69-80)	<b>C</b>		
(55-68)	<b>D</b>		
(39-54)	<b>E</b>		
(21-38)	<b>F</b>		
(1-20)	<b>G</b>		
<i>Not energy efficient - higher running costs</i>			
<b>England &amp; Wales</b>		EU Directive 2002/91/EC	

Agents Note: Whilst every care has been taken to prepare these particulars, they are for guidance purposes only. All measurements are approximate and are for general guidance purposes only and whilst every care has been taken to ensure their accuracy, they should not be relied upon and potential buyers are advised to recheck the measurements.

**BEXLEY HOMES**